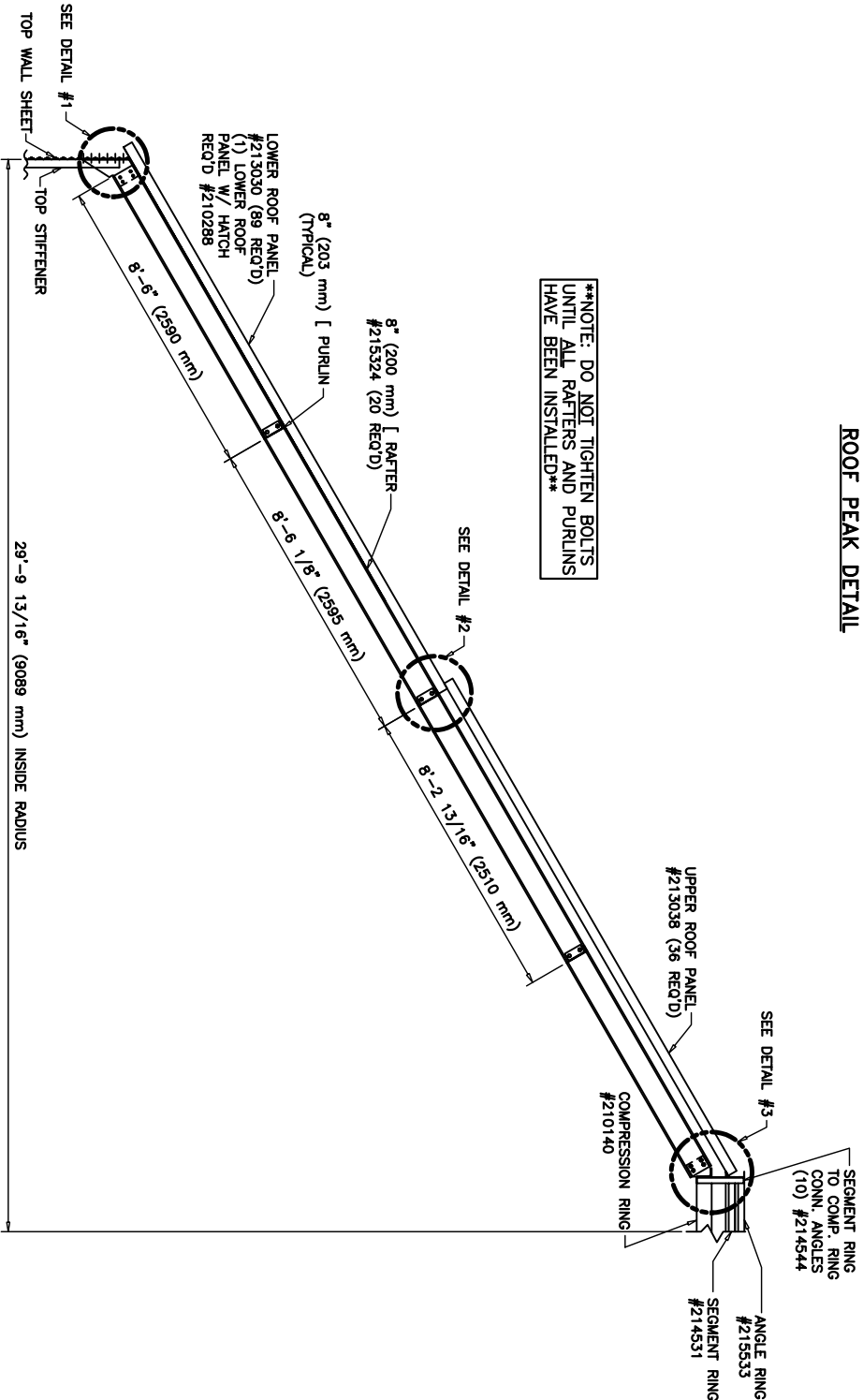
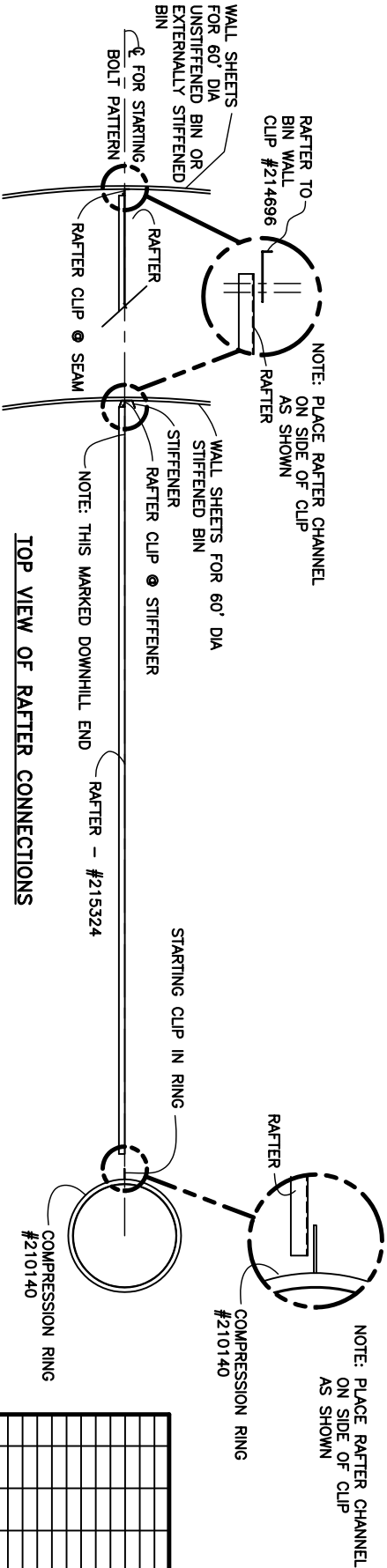


ROOF PEAK DETAIL




RAFTER SECTION



TOP VIEW OF RAFTER CONNECTIONS

REV	BY	DATE	DESCRIPTION OF CHANGE	REV	BY	DATE	DESCRIPTION OF CHANGE	REV	BY	DATE	DESCRIPTION OF CHANGE
BB	JSD	6/15/01	UPDOTE VIEWS	N	CAH	6/13/06	"WALL" WAS BODY; CHG'D S.D. SCREEN LOCATION				
AA	BW	4/4/01	SEE PAGE 2 FOR REVISION	M	JSD	3/13/07	SEE SHEET 2 FOR REVISION				
Z	KY	7/24/01	UPDATED RAFTERS ADDED ANGLE RING	L	JSD	3/3/06	SEE SHEET 2 FOR REVISION				
Y	SP	4/24/01	LOWER ROOF PANEL QTY WAS 72	K	JSD	6/24/06	REVISED & REDRAWN TO CAD				
X	SP	11/17/01	ADDED TOP VIEW OF RAFTER	J	JSD	6/24/06	DELETED SPREADER STRUTS				
W	SP	6/24/06	SEE PHASES 2 & 3 FOR REVISION	H	GW	11/24/01	SEE SHEET 2 FOR REVISION				
V	SP	3/20/06	ADDED SEE DETAIL #5	G	JMT	10/1/07	SEE SHEET 2 FOR REVISION				
U	SP	3/14/06	SEE PHASES 2 & 3 FOR REVISION	F	JMT	4/24/06	SEE SHEET 3 FOR REVISION				
T	SP	3/14/06	REMOVED BRACE RODS: 210288 WAS 210088	E	JMT	7/24/04	REVISED RAFTER TO STIFFENER CLIP				
S	CAH	10/14/04	SEE PHASES 2 & 3 FOR REVISION	D	DEG	7/24/04	REVISED DRAWING				
R	SP	6/14/06	SEE PHASE 2 FOR REVISION	C	DEG	3/17/04	SEE SHEET 2 FOR REVISION				
Q	CAH	7/24/06	SEE PHASE 2 FOR REVISION	B	DD	3/17/04	SEE SHEET 3 FOR REVISION				
P	CAH	7/24/06	SEE PHASE 2 FOR REVISION	A	DD	1/10/03	SEE SHEET 3 FOR REVISION				



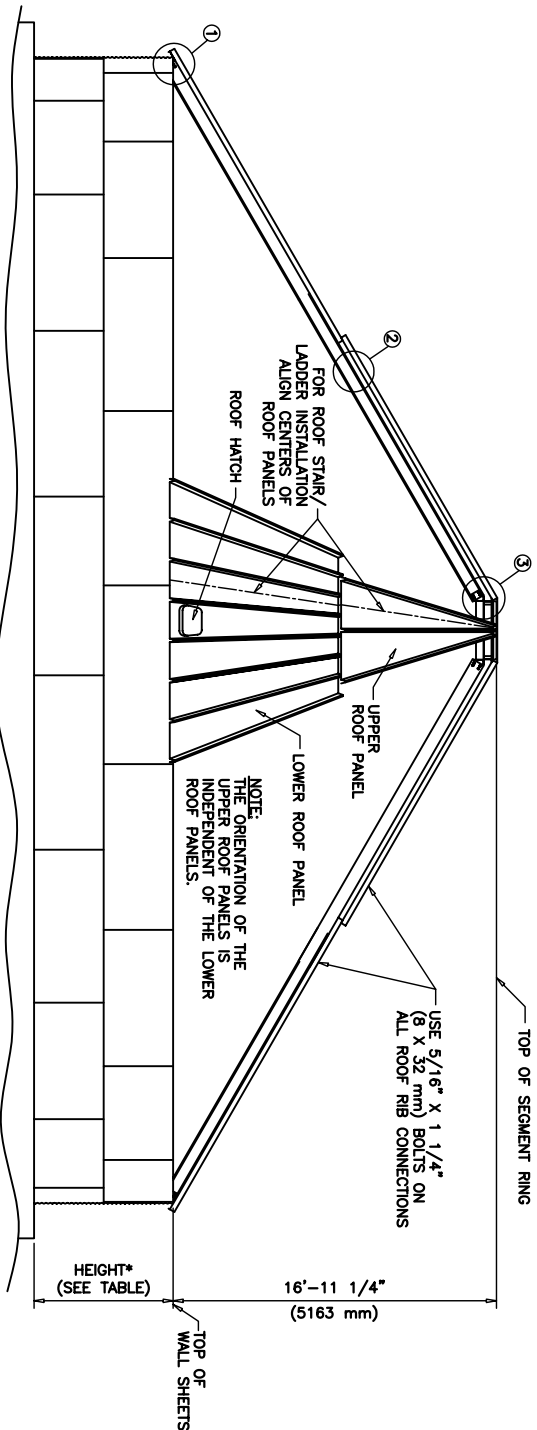
60' DIAMETER BIN

ROOF ERECTION INSTRUCTIONS

BY: DATE: DRAWING NO.: 60ROOF

CHECKED: 10/14/08 SCALE: 1/8\"/>

SCAFFCO Global Systems Company 8200 E. Main Avenue Spokane, WA 99211-1515, USA Tel: 509-325-1571 • Fax: 509-325-9130 • info@scaffco.com • www.scaffco.com



STARTING WALL SHEET HEIGHT	TOP SHEET	*HEIGHT
32" [813]	42 2/3" [1084]	44 5/16" [1125]
42 5/8" [1083]	10 2/3" [271]	54 15/16" [1396]
53 1/8" [1349]	21 1/3" [542]	65 5/8" [1687]
74 5/8" [1895]	42 2/3" [1084]	86 15/16" [2209]

USE 3/8" X 1" (10 X 25 mm) OR 8.2 BOLT W/ 3/8" (10 mm) FLAT WASHER & NUT TO FASTEN THE TRANSITION STRIP TO THE RAFTER.

NOTE: 1 SPACE = 3 1/8" (79 mm)

10 SPACES
5 SPACES

2nd & 4th HOLES ARE USED ON ALL RIB CLIPS.

TRANSITION STRIP MOUNTING CLIP #215586

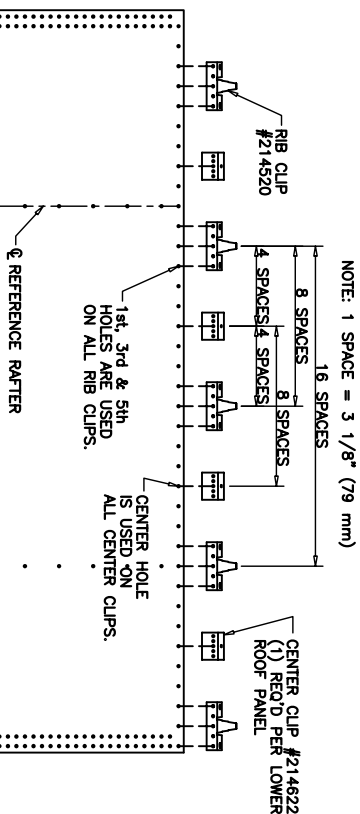
TRANSITION STRIP CONNECTION USE (4) 3/8" X 1" (10 X 25 mm) OR 8.2 BOLTS & HEX NUTS

TRANSITION STRIP #214884

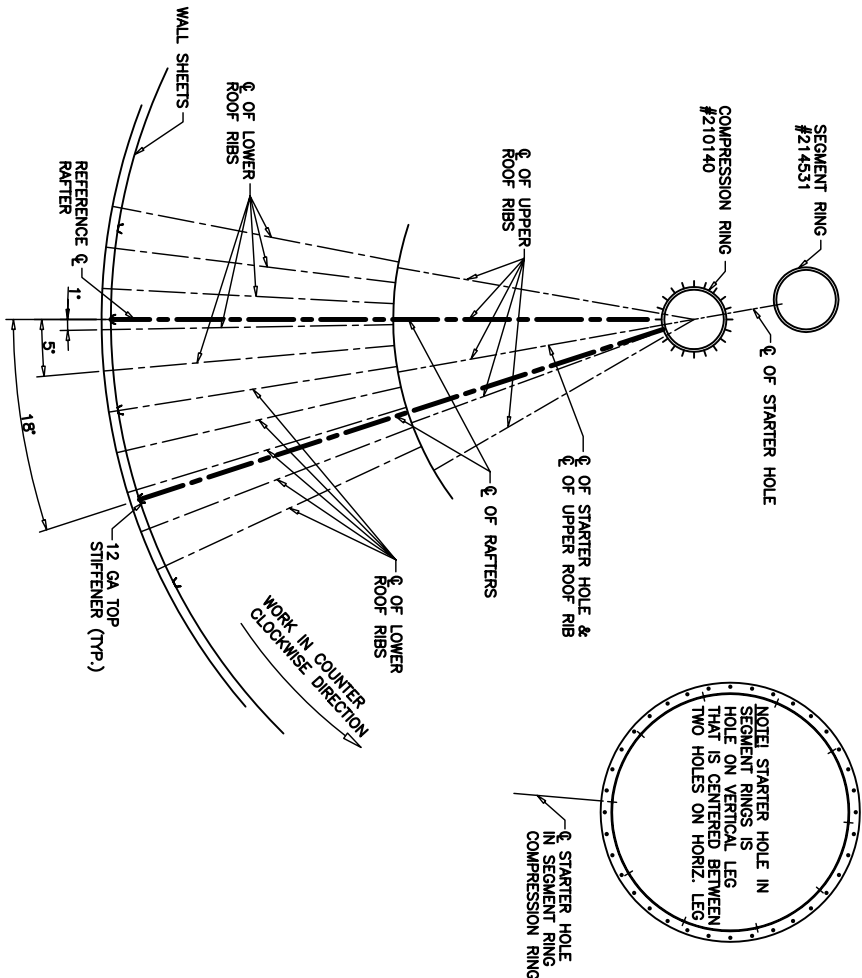
OUTSIDE HOLES ARE USED ON ALL CENTER CLIPS.

CENTER CLIP #214622 (1) REQ'D PER UPPER ROOF PANEL.

VIEW OF TRANSITION STRIP BETWEEN UPPER & LOWER ROOFS



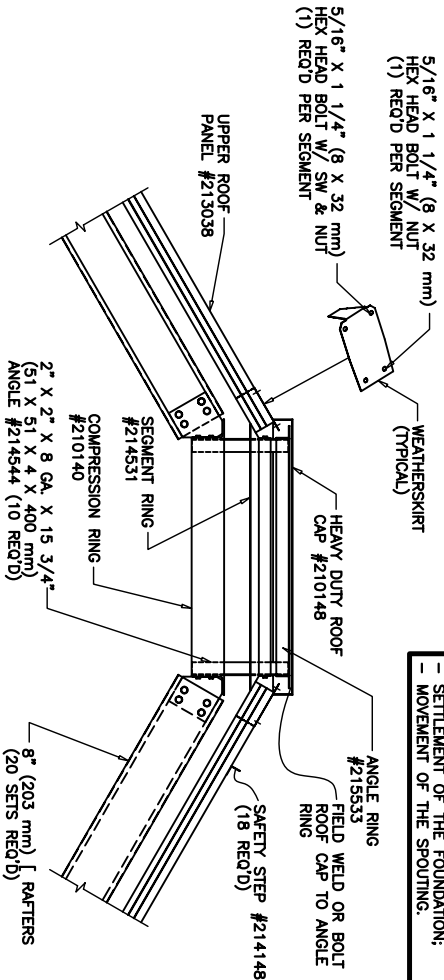
VIEW SHOWING CENTER & RIB CLIP CONNECTION TO TOP WALL SHEET



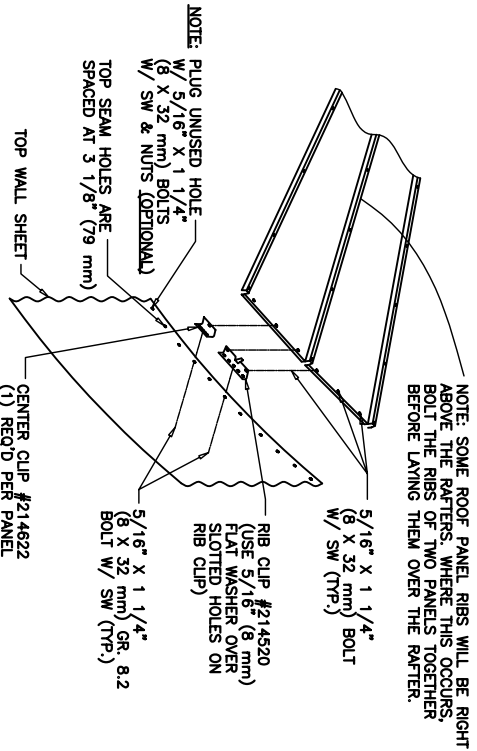
NOTE: BEAD SEALANT OR BUTYL GUN-TYPE CAULKING RECOMMENDED BETWEEN INDIVIDUAL WEATHERSKIRT SEGMENTS.

NOTE: SCAFCO RECOMMENDS AN EXPANSION JOINT IN THE SPOUTING OR A SLIP/Shear CONNECTION TO THE ROOF CAP DUE TO THE POSSIBILITY OF THE FOLLOWING:

- SETTLEMENT OF THE SILLO.
- SETTLEMENT OF THE FOUNDATION;
- MOVEMENT OF THE SPOUTING.




SECTION THRU ROOF CAP



RIB/CENTER CLIP DETAIL

CC	JSD	6/29/02	UPDTE W/TER DETAIL, W/TER DETAIL, AND W/TER DETAIL	P	CAH	7/19/02	5/16" X 1 1/2" OR 3/4" W/TER OR 5 BOIS	REV	BY	DATE	DESCRIPTION OF CHANGE
REV	BY	DATE	DESCRIPTION OF CHANGE	REV	BY	DATE	DESCRIPTION OF CHANGE	REV	BY	DATE	DESCRIPTION OF CHANGE
BB	BW	4/4/01	UPDTE WERE FOR RAFTER ORIENTATION	N	CAH	6/19/01	SEE PAGE 1 & 2 FOR REVISION				
AA	BSW	4/4/01	SEE PAGE 2 FOR REVISION	M	JSD	3/27/01	SEE SHEET 2 FOR REVISION				
Z	KY	7/29/00	REVISED W/TER DETAIL, W/TER DETAIL, AND W/TER DETAIL	L	JSD	3/27/01	SEE SHEET 2 FOR REVISION				
Y	SP	4/29/00	REVISED W/TER DETAIL, W/TER DETAIL, AND W/TER DETAIL	K	JSD	3/27/01	SEE SHEET 2 FOR REVISION				
X	SP	11/17/99	REVISED CENTER & RIB CLIP DETAILS	J	AJD	3/27/01	REVISED & REDRAWN TO CAD				
W	SP	6/29/99	REVISED W/TER DETAIL, W/TER DETAIL, AND W/TER DETAIL	H	GW	11/29/00	DELETED SPREADER STRUTS				
V	SP	3/29/99	ADDED RIB & CENTER CLIP DETAILS	G	JMT	10/1/01	SEE SHEET 2 FOR REVISION				
U	SP	3/1/99	ADDED LINE ON RAFTER DETAIL	F	JMT	4/29/00	REVISED ROOF CAP ASSY				
T	SP	3/1/99	SEE PAGE 1 FOR REVISION	E	JMT	4/29/00	SEE SHEET 1 & 2 FOR REVISIONS				
S	CAH	10/1/99	ADDED W/TER USE 5/16" BOIS ON ROOF RIB DETAIL	D	DEG	7/29/00	UPDATED DRAWING				
R	CAH	6/8/99	SEE PAGE 2 FOR REVISION	C	DEG	3/17/01	SEE SHEET 2 FOR REVISION				
Q	CAH	7/20/99	1" FURROWS & FURROWS WERE "Z" STYLE	B	DD	3/17/01	CHANGED ROOF CAP FINISH				
P	CAH	7/19/99	5/16" X 1 1/2" OR 3/4" W/TER OR 5 BOIS	A	DD	1/10/03	ADDED CENTER CLIP DETAIL				

		SCAFAPRO Steel Spacing Components	
8200 S.E. Main Avenue Suite 100 Portland, OR 97216 Tel: 503-535-1371 • Fax: 503-535-1371 • info@scapro.com • www.scapro.com		1215 S.E. Main Avenue Suite 100 Portland, OR 97216 Tel: 503-535-1371 • Fax: 503-535-1371 • info@scapro.com • www.scapro.com	
ALL DIMENSIONS IN INCHES - DIMENSIONS - LARGER 3/16" INSTEAD OF 1/8"			

ROOF ERECTION INSTRUCTIONS	
60" DIAMETER BIN	
DOMAIN	DATE
BY	DATE
60" ROOF	NO.
CC	REV.

SCAFECO
60' DIAMETER BIN

SCAFECO Global Systems Company
8200 E. Main Avenue
Spokane, WA 99211-1215, USA
Tel: 509-325-1571 • Fax: 509-325-9130 • info@scafeco.com • www.scafeco.com

ROOF ERECTION INSTRUCTIONS

BY: DATE: DRAWING NO.:
0 DAY 4/26/82 60ROOF

APPROVED: JT 10/14/98 SCALE: 1:60 SHEET 3 OF 3